



# GWINNETT EVENT SALES KIT

**#BEMORESOCIAL**

\*PLEASE NOTE THIS SALES KIT IS FOR JAN - NOV.

\*CONTACT OUR SALES TEAM FOR OUR  
DECEMBER HOLIDAY OFFERINGS.

# PICKLE AND SOCIAL

## THE PLACE TO #BEMORESOCIAL

You won't need to look any further, as Pickle and Social is the place to host your next event. We host birthday parties, corporate parties, team-building events, tournaments, and so much more. From our event spaces offering countless ways to play to our curated catering menu and signature drink packages, your event will be completely yours.

- Indoor, Outdoor, or Pavilion Covered Courts
- Rooftop Bar
- Yard with Live Music Stage and Lawn Games
- Meeting Spaces
- Full-Service Restaurant & Bar
- And so much more!

## MAKE YOUR NEXT PARTY AN EVENT

P&S events offer a one-of-a-kind, customizable experience with a multitude of unique event spaces that can accommodate up to 1,500 guests! Custom-create your event and transform any space to what your party desires, the experiences are endless!

- Corporate Events
- Birthday Parties for All Ages
- Bachelor/Bachelorette Parties
- Team Building Events
- Tournaments
- Or Anything Worth Celebrating



# #BEMORESOCIAL



# EVENTS PRICING



**1** RENTAL + **2** FOOD SELECTIONS + **3** BEVERAGE PACKAGE + **4** ENHANCEMENTS = TOTAL EVENT COST\*

## 1

SELECT YOUR DAY & TIME FOR YOUR  
**COURT RENTAL** \*

NON-PEAK MON-FRI: 8AM - 4PM	INDOOR COURTS		OUTDOOR COURTS	
	2HR \$60	3HR \$90	2HR \$40	3HR \$60
PEAK MON-FRI: 4PM - 11PM	INDOOR COURTS		OUTDOOR COURTS	
	2HR \$100	3HR \$150	2HR \$80	3HR \$120
ALL DAY SATURDAY: 8AM - 11PM	INDOOR COURTS		OUTDOOR COURTS	
	2HR \$140	3HR \$210	2HR \$120	3HR \$180
ALL DAY SUNDAY: 8AM - 11PM	INDOOR COURTS		OUTDOOR COURTS	
	2HR \$120	3HR \$180	2HR \$100	3HR \$150

\*Event pricing is charged per court. Each court holds a max of twelve guests. Pricing varies based on date, time, and guest count of your event. Date(s) and time(s) subject to availability. If any portion of your event falls into a higher price tier, you will be charged the higher rate.

## 2

### FOOD SELECTIONS

We don't play games with our food.  
All events require a F&B minimum per person.  
Non-Peak: \$20 Peak: \$24 Premium: \$28

## 3

### BEVERAGE PACKAGE

Pick from numerous select beers, wines and liquor to make your event a party.

## 4

### P&S COACH ENHANCEMENT

Book one of our coaches to help your group play and make your event a hit! It is \$200 for the first hour, and \$100 per hour after that.

### EVENTS INCLUDE:

- Two, Three, or More Hours of Rental Space
- Food & Beverage Selections from our Events Menu
- Dedicated Event Ambassador(s)
- Complementary Paddle and Ball Rental Equipment



# ROOM RENTALS



\* ALL PRICING IS LISTED PER HOUR.

## NON-PEAK:

Mon-Fri: 8am - 4pm

## PEAK:

Mon-Thurs: 4pm - 11pm & Sun: All Day

## PREMIUM:

Fri: 4pm - 11pm & Sat: All Day



### INDOOR FACILITY

\$300 NON-PEAK, \$500 PEAK, \$700 PREMIUM

CAPACITY: 500 GUESTS

#### FEATURES:

SIX INDOOR PICKLEBALL COURTS WITH GARAGE DOORS AND TABLES & BARSTOOLS

### CENTRAL PARK

\$500 NON-PEAK, \$750 PEAK, \$1,000 PREMIUM

CAPACITY : 225 GUESTS

#### FEATURES:

5,000 SF OF SYNTHETIC GREEN SPACE, LIVE MUSIC STAGE, PRIVATE BATHROOMS & YARD GAMES



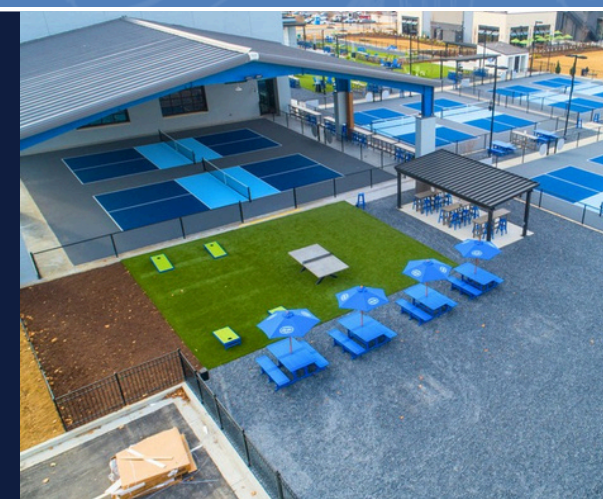
### BACKYARD

\$100 NON-PEAK, \$150 PEAK, \$200 PREMIUM

CAPACITY: 50 GUESTS

#### FEATURES:

SYNTHETIC GRREN SPACE WITH YARD GAMES. ADD ON THE PAVILION COURTS FOR ADDITIONAL SPACE AND FUN





# ROOM RENTALS



\* ALL PRICING IS LISTED PER HOUR.

## NON-PEAK:

Mon-Fri: 8am - 4pm

## PEAK:

Mon-Thurs: 4pm - 11pm & Sun: All Day

## PREMIUM:

Fri: 4pm - 11pm & Sat: All Day



### THE TERRACE LOUNGE

\$250 Per Hour  
Any Day

**CAPACITY: 100 GUESTS**

#### FEATURES:

FULLY EQUIPPED BANQUET SPACE, OR  
TRANSFORM INTO A HOSPITALITY SUITE  
WITH PRIVATE BATHROOMS &  
CONNECTION TO THE TERRACE BAR

### THE ROOFTOP

\$250 NON-PEAK, \$350 PEAK, \$450 PREMIUM

**CAPACITY : 150 GUESTS**

#### FEATURES:

FULL-SERVICE BAR,  
TVS, PATIO CHAIRS AND TABLES



### FRONTYARD

\$150 NON-PEAK, \$250 PEAK, \$350 PREMIUM

**CAPACITY: 150 GUESTS**

#### FEATURES:

3,000 SF OF SYNTHETIC GREEN SPACE WITH ACL CORNHOLE BOARDS &  
LAWN GAMES, PICNIC-STYLE LOUNGE SEATING, BAR STOOLS AND TABLES  
& DIRECT BAR ACCESS



# — FOOD SELECTIONS



## PLATTERS \*EACH SERVE AN AVERAGE OF 4-6 GUESTS

### SWEET & SALTY - \$40

Salty: Served with Cheese Fondue, Honey Mustard

Sweet: Tossed in Cinnamon Sugar, Served with Cream Cheese Icing

### 16-INCH PIZZA

Cheese - \$22  
Pepperoni - \$25  
Speciality - \$30\*

\*BBQ Chicken & Mango Habanero Chicken

### WINGS - \$60

24 Wings Served with Carrots, Celery & Sides of BBQ, Buffalo, Ranch, and Blue Cheese

### HUMMUS DUO - \$75

Red Pepper and Garlic Hummus, Cucumber, Red Onions, Tomatoes, Feta Cheese, Served with Naan Bread Vegetable Crudités

### CHARCUTERIE - \$65

Cheeses & Provisions, Served with Pretzel Bites, Fruit, Drunken Mustard & Red Pepper Jelly

### ALL AMERICAN - \$80

Cheeseburgers Sliders, Crispy Chicken Tenders, French Fries, Ketchup, Mustard, Zinger Sauce

### P&S DIPS - \$65

Salsa, Queso, Guacamole, and Elote Dip, Served with Tortilla Chips

### TACO PLATTER - \$70

18 Tacos Total, Choose Two Proteins: Chicken, Steak, or Shrimp

Flour Tortillas, Fried Jalapeños, Lime Wedges, Pickled Onions, Salsa, Cilantro, and Cheddar Cheese



## BUFFETS \*PRICING IS PER PERSON

\*All Buffets Includes Unlimited Sodas, Teas, Lemonade and Water

### THE EARLY RISER - \$18/PP

Muffins, Croissants, Jams & Jellies, Fruit, Granola, Yogurt, Coffee, Juice

\*Enhancements (PP): Bacon +\$3, Sausage +\$3, Eggs +\$3

### ALL AMERICAN COOKOUT - \$28/PP

Cheeseburger Sliders, Chicken Tenders, Baked Mac n Cheese, Choice of House Chips or Fries, and Kale or Chopped Salad, Served with Sides of Lettuce, Tomato, Cheese, Ketchup, Mustard, and Zinger Sauce

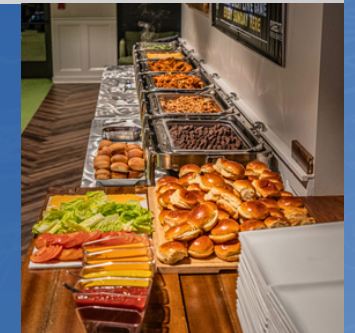
### STREET TACO BAR - \$30/PP

Chicken, Steak, Grilled Veggies, Rice, Black Beans, Sour Cream, Flour Tortillas, Pico De Gallo, Salsa, Lettuce, Cheese, Tortilla Chips

\*Enhancements (PP): Queso +\$3, Guac +\$4, Shrimp +\$8

### BBQ FEAST - \$37/PP

Hot Chicken, Smoked Brisket, Mac n Cheese, Dinner Rolls, and Choice of Southern Green Beans or Baked Beans



## DESSERTS

### SUNDAE BAR - \$5 PER PERSON

Vanilla Ice Cream, Bowls, Toppings, Chocolate & Raspberry Sauce

### SOCIAL DESSERT PLATTER - \$40

Chocolate Chip Cookies, Brownies and Donut Holes with Chocolate & Raspberry Sauce

# — BEVERAGE PACKAGES

2HR	3HR	PER TICKET	
\$24	\$30	\$8	<b>BEER &amp; HOUSE WINE</b> Selection of red and white wine, premium and domestic bottled and draft beer
\$30	\$36	\$12	<b>CALL BEVERAGES</b> Selection of spirits, frozen cocktails, red and white wine, premium and domestic bottled and draft beer
\$36	\$42	\$14	<b>PREMIUM BEVERAGES</b> Selection of premium spirits, frozen cocktails, signature cocktails, red and white wine, premium and domestic bottled and draft beer



\*Enhancements

**WELCOME BEER BUCKETS**

**WELCOME COCKTAILS**

HOURLY PACKAGES ARE PRICED PER GUEST. **PACKAGES DO NOT INCLUDE SHOTS, DOUBLES, ROCKS OR NEAT POURS.**

## OR PICK FROM THE FOLLOWING:

### CONSUMPTION

Full or Limited Bar Available , Charged Per Drink & Placed on Event Host Tab

### INDIVIDUAL CONSUMPTION

Full or Limited Bar Available , Charged Per Drink & Placed on Individual Tabs

### NON-ALCOHOLIC

\$3 Per Person, Includes:  
 Unlimited Sodas, Tea, Lemonade, Water

# — P&S COACH ENHANCEMENTS

## P&S COACH ENHANCEMENT

### HOURLY COST

FIRST HOUR - \$200

ADDITIONAL TIME - \$100/HR

\*per coach. groups of 20+ may need additional coaches.

### INCLUDES:

overview of the sport and guided open play



## GIFTS FOR GUESTS

### SWAG BAG PACKAGE

\$15 PER PACKAGE

### INCLUDES:

- Pickle and Social Koozie
- Pickle and Social Sunglasses
- Dog Bandana

**WANT MORE? WE GOT YOU COVERED. ADD IN SOME FRIENDLY COMPETITION!**

**COMPETITION FEE:** \$35 PER PERSON FOR 2HRS | \$45 PER PERSON FOR 2HRS

## TEAM BUILDING PACKAGE

### INCLUDES:

- Two to three rounds of competition led by your dedicated P&S Coach(es)
- Competitions: Capture the Flag, Target Practice, Cup Castle Trivia, Tic Tac Toe, and more!

## TOURNAMENT PACKAGE

### INCLUDES:

- Tournament led by P&S Coach.
- Winner medals for 1st, 2nd and 3rd place teams
- Format will be determined by P&S Coach

## PICKLE 101 CLINIC & DRILLS

### INCLUDES:

- This is a full-blown pickleball clinic where you will learn how to dink, volley, serve, return of serve, and play with traditional scoring. Will finish up by playing real games. You will leave the event with a broad understanding of the game.

# VISIT US!



OPEN EVERY DAY AT 8 AM

**PICKLE AND SOCIAL GWINNETT**

2925 Buford Drive

Suite 2100

Buford, GA 30519

**PHONE**

470.655.7333

**EMAIL**

[PSGwinnettEvents@CoSoVentures.com](mailto:PSGwinnettEvents@CoSoVentures.com)



# EVENT SALES LOYALTY PROGRAM

UNFORGETTABLE SHARED  
EXPERIENCES ARE ONLY  
ONE CALL AWAY!

A single point of contact  
will work with you from  
beginning to end. They will  
help you streamline venue  
selection, availability, and  
event spaces, along with  
providing pricing on each  
venue's unique offerings.



## HOW IT WORKS

When you book three or more events at any CSV venue within the same calendar year, you'll receive a discount on your total price.